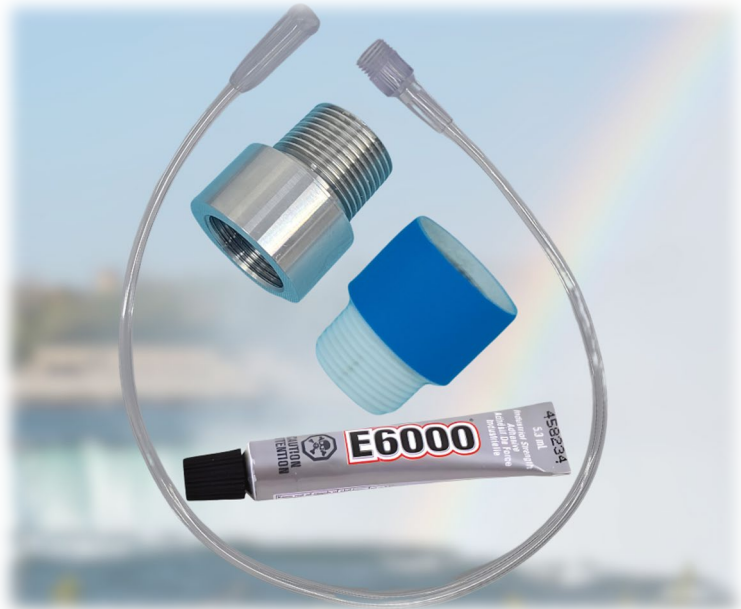




AquaCure®



Tower Cap Base Adaptor Installation Guide

COPYRIGHT NOTICE

© 2025 George Wiseman licensed for use by, for Eagle-Research, and AquaCure.Life. No Copying or Duplicating permitted of any AquaCure documentation, information or videos without the express written permission of George Wiseman.

LIABILITY

Eagle-Research, AquaCure, its manufacturers, distributors, and anyone associated with them assume no responsibility:

1. For any damage, losses, or injuries arising from the regular use of our AquaCure Products or services, including but not limited to errors, omissions, or inaccuracies in the information provided. All use is at your own risk.
2. For any damage, losses, or injuries arising from the misuse of any of our AquaCure products. Follow all the instructions described. Do not open the machine to expose the parts. Personal injury could occur.

Modifications to any AquaCure product must be approved by Eagle-Research, AquaCure.Life, or George Wiseman in writing.

Use of the Products, information, or services confirms acceptance of these conditions. If these conditions are not acceptable, please immediately return the products for a refund.

AquaCure Tower Cap Base Adaptor Installation Guide

Thank you for purchasing the Tower Cap Adaptor or Tower Cap Adaptor Kit. The Tower Cap Adaptor was designed to make sealing the Tower Cap Base threads easier. When using the Teflon Tape, the threads are often not sealed properly, leading to leaks that are both inconvenient and can damage the AquaCure's paint. This Base Adaptor allows a quick, easy and Reliable seal, without any Teflon Tape or tools. (Finger tight does the job). The Tower Cap Base Adaptor is built to last a lifetime, if used correctly. The steel version has a replaceable gasket.

There are 2 purchase options for the Tower Cap Adaptor. The KIT or the Adaptor only.

Included In the Tower Adaptor Kit:



Steel Tower Cap Base Adaptor



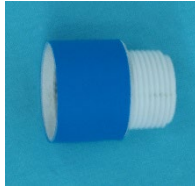
21" replacement Humidifier Hose



5.3 mL E6000 Industrial Adhesive

Included with Adaptor Only:

Tower Cap Base Adaptor (PVC or Steel)



OR



You will need:

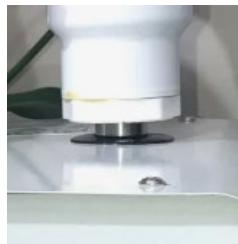
E6000 Industrial Adhesive



21" replacement Humidifier Hose (*recommended*)



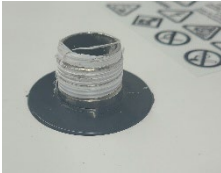
If the base of your tower looks like this, you may not need the longer Humidifier Hose. It is, however, recommended as the location of the 90° fitting may not line up properly after the installation of the Adaptor



Instructions

****Note:** E6000 may damage finished surfaces. Avoid such contact until completely dry. Use nitrile gloves when applying product to any parts. For more information go to www.p65warnings.ca.gov

1. Remove the Tower Cap from your AquaCure.
2. Clean the Teflon from the threads of the metal Water Fill Tube.



3. Look at the threads of the Tower Cap and ensure that they are dry, and free from any particles. If necessary, wipe it using a lint free cloth. This must be clear of any particles to have a proper seal. You can use a small wire brush



4. If your Tower Cap has a Union Base, separate the bottom of the Union from the Tower Cap. Make sure the O-ring has no flat spots, both it and its channel are clean.



5. Apply the E6000 to the threads of the outer threads (Male) of the Adaptor ensuring that all the threads are covered. Do not apply the glue to the threads inside of the Tower Cap, Union, or the Adaptor. Any glue on the female threads will get pushed in (making a mess) when you install the Adaptor.



6. Install the new PVC or Steel Base Adaptor to the Tower Cap Base. Tighten as tight as you can or ask a friend with strong hands.

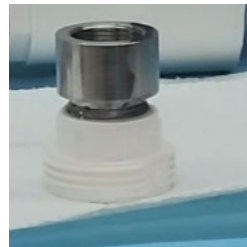
The Base Adaptor is smooth and small, and the Union bottom has sharp threads. Using THICK rubber or leather work gloves is recommended so you can grip the components firmly.

When screwing in the Base Adaptor, it helps the glue seal better if you reverse the screwing about a quarter-turn a couple of times during the screwing-in process.

(Using tools will scratch the Steel or damage the blue sleeve on the PVC)



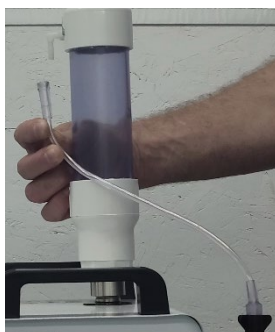
7. Wipe any excess glue and place the tower, or union, upside down to cure for 24 hours.



8. Once cured, screw the bottom of the Union (or if no Union, the Tower Cap) to the AquaCure silver stem, and finger tighten ONLY. DO NOT overtighten as you will damage the rubber sealing surface. Teflon tape is no longer required because the internal washer seals to the AquaCure silver Stem and the Base Adaptor is glued into the Tower Cap Base.



9. When re-installing the Tower Cap, it's good to align the 90° connector to the same side as the humidifier bottle.
10. If the Tower Cap has a union on its Base, use the 21" hose to replace the original hose to your Humidifier Bottle. If there is no union, and the 90° connector does not line up to the same side as the humidifier Bottle, you will also need to replace the shorter hose with the longer one. *The Tower Cap Base Adaptor has increased the height of the Tower Cap and the current 15" hose is not long enough.*



ADDITIONAL INFORMATION

If you require additional assistance with installation or cannot find an answer to your question on our website, please reach out to us at AquaCure.Life/contact or Eagle-Research.com/contact

Pease visit us online at AquaCure.Life or Eagle-Research.com for information on other products, instructional, and informational videos.

Thank you again for your purchase.

